

# Notice of Race and Sailing Instructions

Santa Rosa Sailing Club

## **Frostbite Series 2010-2011**

November 13 (abandoned), December 11, January 8, February 12, March 12,  
and April 10 (make-up day)

Spring Lake, Santa Rosa, CA

It is the responsibility of each skipper to:

- Know the racing rules of sailing.
- Decide whether to race or not, in the prevailing conditions.
- Have the boat and crew prepared.

The race will be governed by the Racing Rules of Sailing. All boats will race with Portsmouth Handicap D-PN. There will be 6 throw-outs. Results will be posted on the SRSC website. Only SRSC members who finish 9 of the 15 races may qualify for recognition.

**Schedule:** Three races, start time for first race is 1:00 P.M.

### **Starting sequence:**

Prep - 3 short whistles

3 minutes to start - 1 short whistle and course announced.

2 minutes to start - 1 short whistle

1 minute to start - 1 long whistle

0 minutes to start - 1 short whistle

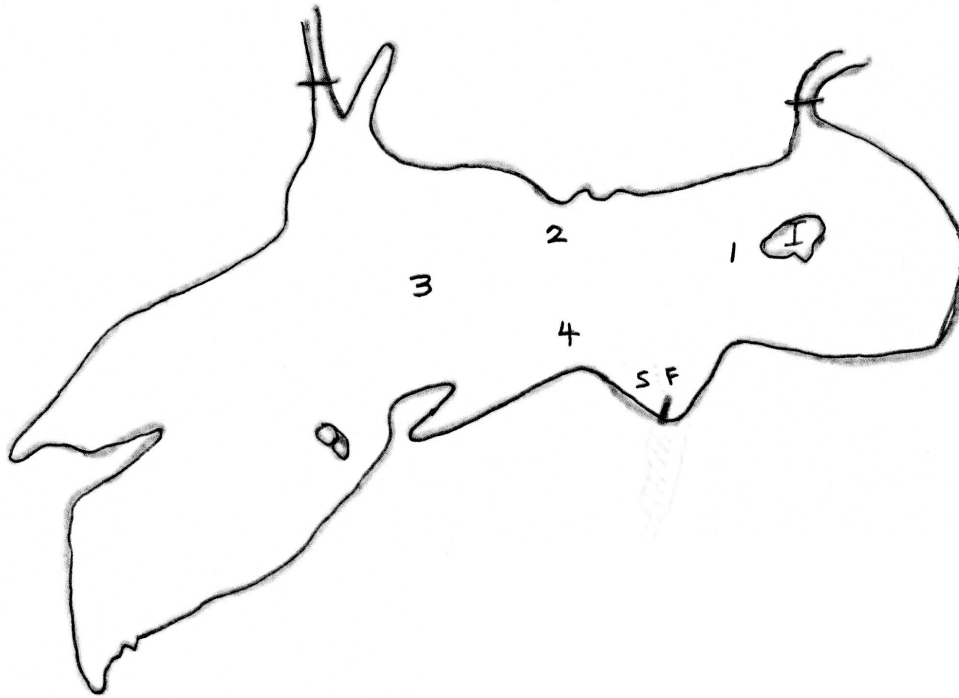
Everyone is responsible for their own finish times. (Elapsed, please.)

### **Courses:**

The start-finish line is off the end of the dock at the launching ramp, from the flag on the dock to the starting mark. There are 4 turning marks placed in Spring Lake. An additional mark this year is the Island, shown as "I" on the chart below.

Wallace Whiting, [wwhiting@unr.edu](mailto:wwhiting@unr.edu), 707-523-2573

# SPRING LAKE



## All marks to port:

1.	S	1	2	F				
2.	S	1	2	4	F			
3.	S	1	2	4	1	2	4	F
4.	S	1	2	3	4	F		
5.	S	1	2	4	1	2	F	
6.	S	1	2	4	1	4	F	
7.	S	1	2	3	4	1	3	F
8.	S	Island	F					
9.	S	Island	2	4	F			
10.	S	Island	2	3	4	F		

## All Marks to Starboard

11.	S	2	1	F				
12.	S	4	2	1	F			
13.	S	4	2	1	4	2	1	F
14.	S	4	3	2	1	F		
15.	S	4	2	1	4	1	F	
16.	S	4	2	1	2	1	F	
17.	S	3	2	1	3	1	F	
18.	S	Island	F					
19.	S	4	3	2	Island	F		
20.	S	4	2	Island	F			